

PGHBA Website: <www.pghba.net> or phone 563-3306, fax 563-3815

Feature Builder of the Week

Durawall Contractors Ltd.



Custom Homes

Since 1974

Call Jim Wallace:

563-8792

Prince George Home Builders' Association

Prince George Home Builders Association Quality Builders

CUSTOM HOME BUILDER

R2000 Certified
10 Year New Home
Warranty

NEWCOMBE CONSTRUCTION LTD. ART NEWCOMBE
564-0543

HAYER HOMES LTD.

Your Largest Custom Home Builder
NO MONEY DOWN • Trades Welcome
WWW.HAYERHOMES.COM

Call 561-1847
Anytime

**CALL 562-2441 TO
ADVERTISE HERE**

Northern Superior Homes Ltd.

10 Year Warranty
Custom Homes, Lockup Framing
Residential & Commercial Renovations

Lorne Newcombe "Committed to After Sales Service"

Fortress Construction

Custom home construction • Residential & Commercial
• Renovations • 10 Yr. New Home Warranty

Kim Forrest 614-1144 • Res. 964-1500

When you want the very best.

NEWBORN HOMES LTD.

SOLD

964-6003
Cell 565-4730

MATTE BROS. & SONS LTD.
(MATTE BROS. & SONS CONSTRUCTION 1974 LTD.)

1056 sq. ft. non-bsmt home on Hart... \$104,500
Must sell - reduced below cost \$95,000

Residential property sales - City & Country Lots -
Mobile Home Properties, 813 Victoria St. 565-8503
Many lots for mobiles and houses

Building to your specifications since 1974
"Custom Building-Custom Design"

JIM WALLACE

BC RESIDENTIAL BUILDER LICENCE - 20098

DURAWALL CONTRACTORS LTD.

Phone: (250) 563-8792 Fax: (250) 563-8792

Home of the Week

TRADITIONAL STYLE EXECUTIVE HOME

This stately home would make an impact on any Street of Dreams. The soaring, double-door entrance, copper roofs on the bay windows and extensive use of brick all add to the eye-stopping appeal of the exterior.

Inside the house, the interior offers all the bells and whistles to be expected of such an executive-style home. The raised, arc-covered entrance with its transom window opens into a spectacular foyer, two storeys in height. The slightly curved staircase is enclosed by a feature railing and a half-rounded Juliet balcony at the top offers a dramatic view of the foyer.

Raised, sloping ceilings and a central gas fireplace add interest to the living room. The traditional bay window at the front and full-length side windows flanking the fireplace bring a generous amount of natural light to this impressive room.

The dining room is an extension of the living room and includes a useful buffet space and french doors that open out to a covered deck and a view of the back garden.

The den across the foyer from the living room also has a bay window, which adds so much to both the exterior and interior design. The den could do double-duty as a library or could be used as a home office, if desired. French doors lead to the informal family areas at the rear of the house.

The kitchen is sure to please the cooks in the family, offering plenty of work space, a pantry and a good-sized breakfast bar for coffees, snacks, or breakfast itself. Space in the breakfast room is expanded by the addition of a bay window, with french doors that open out to the rear patio.

The expansive family room is flooded with natural light from rear windows, sliding glass door to the patio and piano-style windows on either side of the gas fireplace. This is a room in which to relax and enjoy year-round.

A powder room, laundry room and access from the double garage complete the main floor layout. Upstairs, double doors open into a magnificent master suite that offers a true retreat for the homeowners. Large rear windows and a fireplace add to the atmosphere. The six-piece en suite bathroom is a sybaritic delight, with a double vanity and separate make-up counter, separate shower, bidet, toilet and tile-surrounded corner soaker tub. A large walk-in closet provides plenty of space for his-and-her clothes.

Three good-sized secondary bedrooms share a central, four-piece main bathroom. Two of the bedrooms have bay windows - the children will have to toss for these.

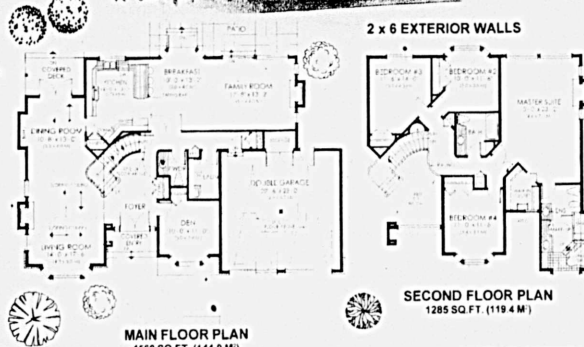
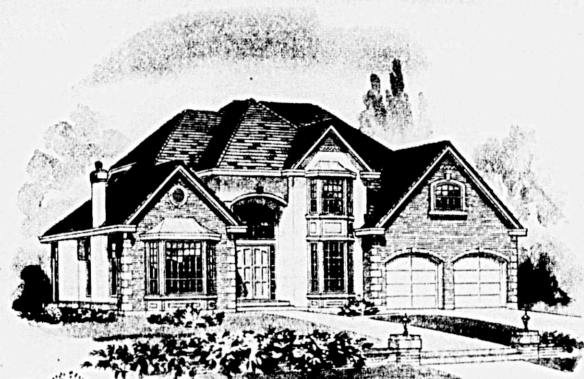
Corner stone and brick facade, detailed stucco trim and a concrete slate tile roof add to the distinctive appearance of the exterior. The house is 60 feet wide and 40 feet, 10 inches deep with 2,861 square feet of living space and an unfinished basement.

Plans for design H7-4-800 are available for \$565 (set of 5), \$722 (set of 8), and \$722 for a super set of 10. B.C. residents add seven per cent Prov. Sales Tax. Also add \$15.00 for Priority courier charges within B.C. or \$25.00 outside of B.C. Please add 7% G.S.T. or 15% H.S.T. (where applicable) to both the plan price and postage charges.

Our New 32nd Edition of the Home Plan Catalogue containing over 300 plans is available for \$11.50 (includes taxes, postage, and handling). Make all cheques and money orders payable to "Home Plan of the Week" and mail to:

HOME PLAN OF THE WEEK
c/o... (The Prince George Citizen)
336 Columbia Street, New Westminster, BC V3L 1A6

OR SEE OUR WEB PAGE ORDER FORM ON: <http://www.jenish.com> AND E-MAIL YOUR ORDER TO: homeplans@jenish.com YOUR ORDER TO: homeplans@jenish.com



WIDTH - 60'-0" (18.3 M)
DEPTH - 41'-0" (12.5 M)
PLAN NO. H7-4-800
TOTAL 2845 SQ. FT. (264.3 M²)

Members Profile

Spruce Capital

Truss



BUILD WITH US...

A local business supporting local industry.

The qualified staff of Spruce Capital Truss has been providing Prince George homebuilders with personalized service for over 15 years.

Spruce Capital Truss has recently entered into the commercial arena of Engineered Wood Products. They have been instrumental in many commercial developments in our community. They constructed the engineered roof and flooring systems in the Fraser Fort George Regional District building. In addition, they have been a part of the development of several local strip malls and numerous multiple-family projects.

"The majority of the lumber used in our trusses is milled locally," says Keith Annis, "We are committed to using and promoting B.C. products, both locally and abroad."

Spruce Capital Truss has been successful in marketing local products to a competitive overseas market. They export B.C. products to China, Japan, Korea, Russia and Iceland.

Visit Spruce Capital Truss at 590A Tomlin Road. Their staff strives to maintain a high level of knowledge in a market that is in a constant state of change. They are who you want to see for all your engineered wood products.

Service & Professional Members

Are you a Service or Professional Member & would like to advertise here?

Call 562-2441

Arctic Roofing Ltd.

- APP-SBS modified systems
- Tar and gravel
- Asphalt and fiberglass shingles, cedar shakes
- Member of RCABC

829 5th Avenue, Prince George, B.C. V2L 3K5
Bus: 562-8747 • Fax 562-1609

VAN WAY CABINETS

Kitchen & Vanity Cabinets & Countertops
Free In-home Consultations

Office & Showroom
481 Third Avenue
Prince George, BC, V2L 3C1

Tel: (250) 561-2801
Fax: (250) 561-0536

T&E ELECTRIC LTD.

Electrical Contractors
Residential • Commercial

562-4153
Fax (604) 562-4154

LARRY ROMANUIK

Spruce Capital Truss

590A Tomlin Road
Tele: 561-2079
Fax: 562-7346

CMHC SCHL Canada

Canada Mortgage & Housing Corporation

561-5433

R.L. JOHNS LAND SURVEYING LTD.

LEGAL and ENGINEERING SURVEYS

LAND, CONSTRUCTION & LOCATION SURVEYS

240 VICTORIA STREET • 562-5759

BARTON INSURANCE BROKERS

ROBERT M. LEIGHTON
COMMERCIAL ACCOUNT MANAGER
FINANCIAL SERVICES ADVISOR

Bus. (250) 612-4475
Fax (250) 563-4219
Res (250) 562-4667
Cell (250) 613-9420

500 Victoria Street
Prince George, B.C. V2L 2J9

DISCOVERINGS

WE make it all so easy.

1557 S. Lyon St., Prince George, B.C.
CALL TODAY: 564-1344

Jorgensen & Nelson Appraisals Ltd.

1898 3rd Ave., Prince George, B.C. V2M 1G4
Ph. 564-2840 Fax: 562-1420

PRINCE GEORGE SAVINGS

Town Centre Branch
1532 6th Ave.

5th & Abbots Branch
513 Abbots St.

Parkwood Place Branch

PhoneLink
612-3456

MODERN COUNTERTOPS
YOUR COMPLETE COUNTERTOP CENTRE

161 Kingston Street
563-9193
FAX: 563-5748

GIENOW WINDOWS & DOORS

The Clear Leader in Comfort & Performance

We specialize in: Vinyl, Wood, Aluminum Clad Wood Windows, Patio Doors and Steel Entrance Systems.

1552 Quinn St., Prince George, B.C.
Ph. 564-7888 Fax: (250) 564-4415 Toll Free 1-800-345-4995

R.E. GOOK & ASSOCIATES
B.C. LAND SURVEYORS

BUILDING LAYOUT - LOCATION CERTIFICATES
SITE SURVEYS - SUBDIVISION PLANNING & DESIGN

886 Vancouver St.
Ph. 564-4242
FAX: 564-5343

Kilbride Land Surveying Ltd.
B.C. Land Surveyors

185 Quebec St., Pr. George, B.C., V2L 1W1
562-1196 Fax: 562-3656