



DON FROOD
562-3600
565-5106

RE/MAX Centre City Realty

EXTRA LARGE LOT

In Beaverly. 8.99 acres on corner of Robson Rd and Outlook Rd. Well treed and only

\$46,000

DUPLEX LOT POTENTIAL

on the corner of 5th and Ewert. 50 x 120 and priced at

\$45,000



UPDATED LOG AND FRAME HOUSE on over 10 acres in Cluculz Lk area. Complete with approximately a 1 acre corral. Reduced to \$135,000.



2 VERY AFFORDABLE 1 bedroom condos in a first class building. Strata fee includes heat.



FULLY LANDSCAPED MOBILE in Burl Garden. Two garden sheds, lots of privacy. 1992 mobile. \$65,500.



1988 DARTMOUTH on .64 acre. Lots of room for trucks here. \$95,000.

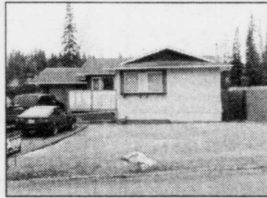


1992 CLASSIC with porch, skylight and garden shed. \$63,900.



DONA BRAET
561-6623

RE/MAX
Centre City Realty



IF YOU WANT VALUE...

then take a look at this hot new listing on .25 acre. 1040 sq ft, 3 bdrms & much more!

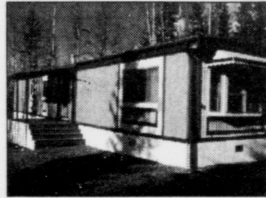
ALL FOR \$109,900

Call Dona now 561-6623.



4612 HUNTER PL

Absolutely fantastic one of a kind home with all the extras one would expect from such a beauty. 3000 sq ft, 2 bedroom in-law suite, in the Heritage area. \$269,000—Keven Braet 561-6629.



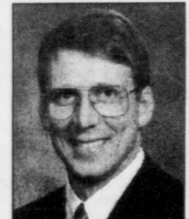
10050 MERTON PL

nestled on a roomy 4.4 ac lot in the Eagleview farms area off the Shelley Rd. This 14 x 70 is a wonderful place for a young family. Clean and ready for its new family. \$69,900 Keven Braet 561-6629.



CLEAN! CLEAN! CLEAN!

Pride in ownership shows. Oak kitchen, 2 FP, jacuzzi tub. Greenhouse, hot tub & gazebo. Only \$124,900. Call Keven 561-6629 pager.



KEVEN BRAET
561-6629

1679-15th Avenue,
Prince George



RE/MAX CENTRE CITY REALTY
1679-15th Avenue • Prince George

562-3600



LOTS OF GREENBELT View, privacy, fully dev home plus super quality 900 sq ft addition. Jane 561-6686.

WHAT A PLACE TO BUILD!!!

19.32 treed acres, 275 ft waterfront, West Lake.

CALL JANE 561-6686
\$134,900



JUST A GREAT HOME with a fantastic view, lg back yard, walk-out bsmt. Jane 561-6686.



THIS BEAUTIFUL COUNTRY HOME provides 2 complete residences. Approved bed & breakfast. Accommodation for horses, RV, machinery & trucks. Quiet location. \$279,900. Pat Nahrang 561-6425.



SUPER FAMILY HOME 1248 sq ft completely developed with 5 bedrooms, 3 baths, great rec room, and a dble garage backing onto a park. ACT FAST! \$167,900. Pat Nahrang 564-1920.



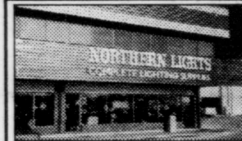
HORSING AROUND? Ideal set-up for you and your horses. 4 bdrm, 3 baths, family room, multi-decks, fireplace plus fully fenced, barn, round pen area, riding arena and more in Beaverly. \$189,500. Bob Kemp / Tom Endean 562-3600.



UPDATED IN COLLEGE HEIGHTS Newer roof, paint & flooring. 2 FP, eating area, large deck, fenced yard, fin basement, concrete driveway. Clost to school & playground. Call today for Bob or Tom 562-3600. \$157,500.



EXCELLENT LOCATION 2nd & Hammond Fully dev home. 3 bdrms up, main floor laundry, 3 baths, fireplace, dble CP, paved drive, fenced, new roof and more. Call Bob or Tom 562-3600. \$144,900.



PROFITABLE BUSINESS Ideal opportunity for husband & wife. Good exposure with lots of repeat clientele. Seller will look at financing a qualified buyer with good down payment. \$94,000. Bob Kemp / Tom Endean 562-3600.



CHARMING COUNTRY PROPERTY in Miworth. Gorgeous oak kitchen, dining room with sliding glass doors to sun-deck. Enjoy the peace & quiet. Call Sue Lynch at 964-8887. \$139,900.

IT'S THE EXPERIENCE!

RE/MAX CENTRE CITY REALTY

