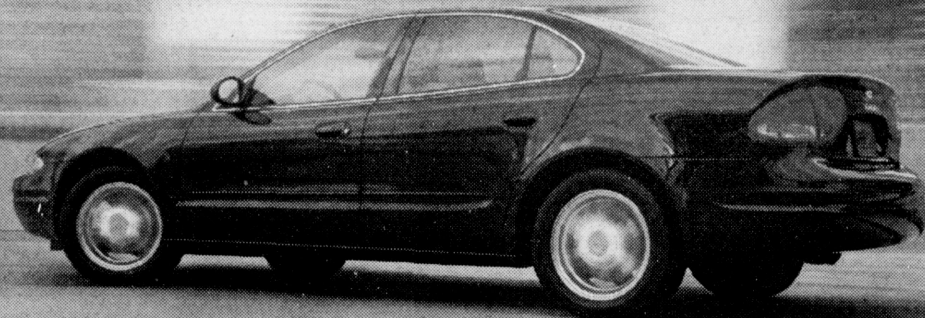


# IT'S REMARKABLE HOW FAST TECHNOLOGY CAN MOVE.



## ALERO BY OLDSMOBILE

### "2000 CARGUIDE BEST BUY AWARD"

Equipped with: 150HP 2.4L Twin Cam SFI Engine • 4-Speed Automatic Transmission with Enhanced Traction System • 4-Wheel Disc Brakes with ABS • Next Generation Driver and Front Passenger Air Bags • PASSLock® Theft-Deterrent System • Power Door Locks/Windows/Trunk Release • Remote Keyless Entry • AM/FM Stereo and CD Player • Air Conditioning • Compact Sedan Category

**SMARTLEASE**  
**\$278\***

per month for 36 months with \$3,365 down.  
Security deposit \$325.

**2.9%**  
up to 48 months.

**\$23,368†**

INCLUDES FREIGHT  
OF \$770 AND PDI.  
License, insurance and taxes extra.

#### ALERO LEASE OPTIONS

MONTHLY LEASE PAYMENT	DOWN PAYMENT	TOTAL DUE ON SIGNING▲
\$278	\$3,365	\$4,478
\$327	\$1,685	\$2,669
\$376	\$0	\$879

Lease payments based on 36 month term. Security deposit required. ▲ Total due on signing for down payment, security deposit, 1st month's payment plus taxes, GST and PST. License, insurance, battery levy, environmental levy, registration and administration fees extra.

## INTRIGUE BY OLDSMOBILE

### "TOP 10 BEST ENGINES" WARD'S AUTOWORLD®

Equipped with: 215HP 3.5L DOHC Premium V6 SFI Engine • 4-Speed Electronic Overdrive Automatic Transmission • 4-Wheel Disc Brakes with ABS • Next Generation Driver and Front Passenger Air Bags • PASSLock® Theft-Deterrent System • Magnasteer® Variable-Effort Power Steering • Power Door Locks/Windows/Mirrors • Remote Keyless Entry • AM/FM Stereo and CD Player • 16" Aluminum Wheels • Air Conditioning

**SMARTLEASE**  
**\$328\***

per month for 36 months with \$3,815 down.  
Security deposit \$375.

**4.9%**  
up to 48 months.

**\$28,258†**

INCLUDES FREIGHT  
OF \$895 AND PDI.  
License, insurance and taxes extra.

#### INTRIGUE LEASE OPTIONS

MONTHLY LEASE PAYMENT	DOWN PAYMENT	TOTAL DUE ON SIGNING▲
\$328	\$3,815	\$5,098
\$384	\$1,900	\$3,054
\$440	\$0	\$1,027

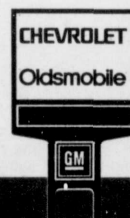
Lease payments based on 36 month term. Security deposit required. ▲ Total due on signing for down payment, security deposit, 1st month's payment plus taxes, GST and PST. License, insurance, battery levy, environmental levy, registration and administration fees extra.



**FOR A LIMITED TIME AT YOUR LOCAL BC OLDSMOBILE DEALERS**



We'd like you to know more: Come visit us at your local dealer, on our website at [www.gmcanada.com](http://www.gmcanada.com) or call us at 1-800-GM-DRIVE. \*Based on a 36 month lease for Oldsmobile Alero GL R7Z/ Intrigue R7Z. Security deposit of \$325/ \$375 required. Total obligation is \$13,374/ \$15,622. All leases have annual kilometer limit 20,000 km, \$0.12 per excess kilometer. Other lease options available. Option to purchase at lease end is \$11,597/ \$14,928 (plus applicable taxes). †Freight included. License, insurance, and taxes not included. Dealer may sell or lease for less. †Financing on approved GMAC credit only. Example: \$10,000 at 2.9%/4.9% APR, the monthly payment is \$220.90/ \$229.84 for 48 months. Cost of borrowing is \$603.20/ \$1,032.32. Total obligation is \$10,603.20/ \$11,032.32. Down payment and/or trade may be required. Monthly payment and cost of borrowing will vary depending on amount borrowed and down payment/trade. ††Offers apply only to 2000 new or demonstrator models of vehicles equipped as described and applies to qualified retail customers in the BC Dealer Marketing Association area only. Limited time offers which may not be combined with other offers. Dealer order or trade may be necessary. See your dealer(s) for conditions and details.



**WOOD  
Wheaton**

CHEVROLET-OLDSMOBILE-CADILLAC

2000 Victoria Street • Prince George, BC • Visit us on the website at [www.wood-wheaton.com](http://www.wood-wheaton.com) • DL 9621

**This is CHEVY country! What do you drive?**

**Call 564-4466**

Out of town call Toll Free 1-800-665-8353

