

Building/Bonds



Paul Michel, left, and Ralph Wright of Prince George beat the drum for community spirit and understanding during the CNC First Nations Second Annual Lahal tournament. The game of lahal is used to strengthen bonds between First Nations communities. CAM MCALPINE/FREE PRESS

Japanese business leaders liked northern tour

The reception for three Japanese business officials was "open and friendly" this week in Prince George and Prince Rupert, says Northern Commissioner John Backhouse.

Mr. Backhouse says it was the first visit to northern B.C. by Yasushi Yamazaki of the Japan External Trade Organization and Tadashi Miyagawa, Japan's consul for economic affairs. Toshiumi Aoki, vice-president of Mitsui & Co., the number

three company on the Fortune 500, accompanied them. "They see some potential opportunities," says Mr. Backhouse, declining to elaborate.

He arranged the tour for the three Vancouver-based officials at the urging of Pacific Western Brewery president Kazuko Komatsu.

Mr. Backhouse plans to do some follow-up. "When I meet with them again, I will talk about outcomes from the trip."



Foundation for
Foreign Study

is having a
*Spaghetti Dinner,
Family Dance &
Silent Auction*

at the Hart Community Centre
Sunday, June 25th, 4pm - 9pm



All You Can Eat Spaghetti Dinner for \$5.00
Kids under 3 are FREE!!

Seniors and Kids 4-12 are only \$4.00

There will be salad, garlic toast and dessert!

After dinner enjoy Mike from Shanadine Music auctioning off various items donated from businesses in our community as well as having the opportunity to cut a rug to his many tunes.

COME OUT AND SUPPORT OUR LOCAL KIDS GOING TO STUDY IN ANOTHER COUNTRY FOR A SCHOOL SEMESTER OR SCHOOL YEAR.

A big thank you to Virginia at the Hart Community Centre for making this event possible!

Business Sponsors: Dick Byl Law, VanHorlicks Trophy & Gift House, PG Portable Toilet Services, Prince George Steel, Shanandine Music Services

Major Sponsors: Hits 101.3 FM, Teamsport, PG Free Press

Your Source for Specialty Lumber Products

- Lumber
- Treated Lumber
- Sheds
- Fencing
- Plywood
- Greenhouse Packages
- Timbers

Customer Satisfaction Guaranteed

Sunday, June 25th Only: Re-sawn 1x6 - 6' **ONLY \$1.10 each**

Re-sawn 1x6 - 6' **\$1.15 each**
STARTING AT **\$780.00**
Pre-fab Shed 8' x 10'

WE WILL
CUT
TO CUSTOMER
SPECS
LUMBER & PLYWOOD

CUSTOM BUILT SHEDS

PRE-BUILT SHEDS
8' x 8' 8' x 10'
In stock

OPEN
MON-FRI • 7AM-5PM
SAT. • 8AM-5PM
SUN. • 9AM-4PM



Dollar Saver Lumber Ltd.

561-2161 Fax: 561-2767

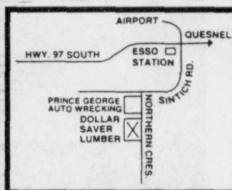
Out of Town call us collect!

visit our website: www.lumber.bc.ca

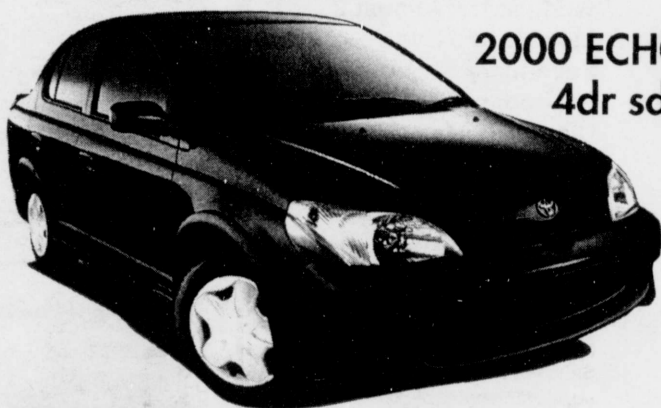
9359 Northern Cres.

BCR Industrial Site

(Next to PG Auto Wrecking)



Quality you can depend on.
See your Toyota dealer today!



2000 ECHO
4dr sdn

Includes: P175/65R14 tires (4), full wheel covers, colour bumpers, intermittent wipers, colour door handles, remote control mirrors, AM/FM CD, block heater, undercoating, freight & PDS.

\$219⁵⁰

/mo. lease for 48 months

Purchase 2000 Echo
@ 6.9% Finance for
48 months

Lease offers from Toyota Credit Canada Inc. for qualified retail customers O.A.C. Lease payments of \$219.50 plus taxes for 2000 Echo 4dr (BT123P-BA00) based on 48 month walkaway lease with \$3,027.54 total start-up costs (first payment, security deposit, taxes and administration fee included or equivalent trade). Total lease obligations are \$14,513.82. Lease payments based on a maximum of 96,000 kms. Excludes licence and insurance.



Northern Toyota

DL 8877A 2005 REDWOOD ST. (250) 564-7205 1-800-331-2005

