



CANADA WIDE CLEARANCE

You're in the driver's seat long before you buy the car.



PLUS GM MAKES YOUR FIRST PAYMENT.**

PONTIAC SUNFIRE SL SEDAN

- 5-Year/100,000 km Powertrain Warranty
- 5-Speed Getrag Transmission • 2.2L L4 SFI Engine
- Anti-Lock Braking System • Theft Deterrent System

SmartLease per month/48 months
OR **\$232***
\$0 down payment,
\$300 security deposit required.

CASH PURCHASE PRICE
OR **\$13,485†**
INCLUDES FREIGHT OF \$730 AND PDI.
LICENCE, INSURANCE AND TAXES EXTRA.

0.9% Purchase Financing up to 60 months on Sunfires



PONTIAC GRAND AM SE

- 2.4L Twin Cam 150 HP Engine • 4-Speed Automatic Transmission
- with Enhanced Traction System • 4-Wheel Anti-Lock Braking System • AM/FM Stereo with CD • Air Conditioning

SmartLease per month/48 months
OR **\$258***
\$3,170 down payment,
\$300 security deposit required.

CASH PURCHASE PRICE
OR **\$20,998†**
INCLUDES FREIGHT OF \$795 AND PDI.
LICENCE, INSURANCE AND TAXES EXTRA.



BUICK CENTURY

Consumers Digest Best Buy for the last 4 years

- 3.1L V6 175 HP Engine • 4-Speed Automatic Transmission with Enhanced Traction System • 6-Way Power Driver's Seat • Remote Keyless Entry with Panic Feature • Theft Deterrent System
- AM/FM Stereo with CD

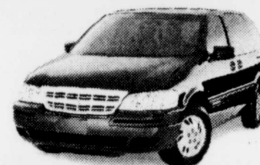
SmartLease per month/48 months
OR **\$318***
\$4,310 down payment,
\$375 security deposit required.

CASH PURCHASE PRICE
OR **\$26,298†**
INCLUDES FREIGHT OF \$495 AND PDI.
LICENCE, INSURANCE AND TAXES EXTRA.

0.9%
Purchase Financing
up to 48 months*
on virtually all
2001 vehicles

CHEVROLET
Oldsmobile

PONTIAC
BUICK
GMC



PLUS GM MAKES YOUR FIRST PAYMENT.**

CHEVROLET VENTURE VALUE VAN

- 3.4L V6 185 HP Engine • 4-Speed Automatic Transmission
- 4-Wheel Anti-Lock Braking System • Air Conditioning • Standard Integral Child Seat • AM/FM Stereo CD Player

***** 5-Star Safety Rating

Chevrolet Venture holds a 5-star driver seat rating in side-impact testing* and is Canada's best fuel economy.♦♦

SmartLease per month/48 months
OR **\$238***
\$4,605 down payment,
\$300 security deposit required.

CASH PURCHASE PRICE
OR **\$23,368†**
INCLUDES FREIGHT OF \$540 AND PDI.
LICENCE, INSURANCE AND TAXES EXTRA.



CHEVY BLAZER 2-DOOR

- Vortec 4300 V6 190 HP Engine • 4-Speed Automatic Transmission
- Bose® Premium Sound System • Redundant Steering Wheel Controls • Air Conditioning • Power Door Locks/Windows/Mirrors
- 4-Wheel Anti-Lock Braking System • Tilt Wheel Steering and Cruise Control • Locking Differential • Remote Keyless Entry

SmartLease per month/48 months
OR **\$328***
\$4,075 down payment,
\$375 security deposit required.

CASH PURCHASE PRICE
OR **\$28,818†**
INCLUDES FREIGHT OF \$635 AND PDI.
LICENCE, INSURANCE AND TAXES EXTRA.

0.9% Purchase Financing up to 60 months on Blazers



1.9%
PURCHASE FINANCING
UP TO 48 MONTHS!



CHEVY SILVERADO EXTENDED CAB 2WD

- 270 HP Vortec 4800 V8 Engine • 4-Speed Automatic Transmission with Overdrive and Tow/Haul Mode • 4-Wheel Anti-Lock Braking System • Full instrumentation including Tachometer, Engine Hourmeter and Driver Message Center • 40/20/40 Split Front Bench Seat with Custom Cloth Trim • Chrome Grille, Bumper
- Locking Differential • AM/FM Stereo Cassette Player • Automatic Headlights • Tilt Wheel and Cruise Control

SmartLease per month/36 months
OR **\$368***
\$3,770 down payment,
\$425 security deposit required.

CASH PURCHASE PRICE
OR **\$28,548†**
INCLUDES FREIGHT OF \$990 AND PDI.
LICENCE, INSURANCE AND TAXES EXTRA.

FOR THE LATEST INFORMATION, DROP BY YOUR LOCAL PONTIAC • BUICK • GMC DEALER OR CHEVROLET • OLDSMOBILE DEALER, VISIT US AT www.gmcanada.com OR CALL 1-800-GM-DRIVE.



*Based on a 48 month lease for Sunfire SL R7Z, Grand Am R7Z, Century R7X, Venture Value Van R7Z, Blazer 2-Door R7A and a 36 month lease for Silverado Extended Cab 2WD R7A. Total obligation is \$11,128/\$15,552/\$19,574/\$16,030/\$19,817/\$17,019 (plus applicable taxes). Annual kilometer limit 20,000 km. \$0.12 per excess kilometer. Option to purchase at lease end is \$5,575, \$8,278, \$10,686, \$9,983, \$12,485, \$15,506 (plus applicable taxes). Other lease options available. *Freight included. License, insurance, and taxes not included. Dealers are free to set individual prices. Financing on approved GMAC credit only for remaining 2001 Chevrolet, Oldsmobile, Pontiac, Buick and GMC vehicles. Down payment/trade and/or security deposit may be required. Monthly payment and cost of borrowing will vary depending on amount borrowed and down payment/trade. Example: \$10,000 at 0.9% APR, the monthly payment is \$212.18 for 48 months. Cost of borrowing is \$392.96. Total obligation is \$10,392.96. Down payment and/or trade may be required. Monthly payment and cost of borrowing will vary depending on amount borrowed and down payment/trade. †The SmartLease monthly payment and the GMAC Purchase Finance rate for Sunfire SL R7Z, Grand Am R7Z, Century R7X, Venture Value Van R7Z, Blazer 2-Door R7A, Silverado Extended Cab 2WD R7A is not available with and is not calculated on the "Cash Purchase" price as shown. The difference between the price for the SmartLease/GMAC Purchase Finance offer and the "Cash Purchase" offer is deemed under provincial disclosure laws to be a cost of borrowing, whether or not the same represents actual interest and is required to be expressed as an annual percentage rate which is 6.53%, 3.78%, 2.75%, 5.10%, 3.59%, 4.05%. Offers apply to new or demonstrator 2001 models and applies to qualified retail customers in the BC Dealer Marketing Association area only. Dealer trade may be necessary. Limited time offer which may not be combined with other offers. See your Dealer for conditions and details. 10.9% Purchase financing does not apply to Corvett, Chevy Express, Chevy/GMC 1500/2500/3500 Series Pickups, Tahoe, Suburban, GMC Savana, Yukon, Yukon XL, Denali, XL Denali, Cadillac. **General Motors will pay first month's GMAC purchase finance or lease payment up to \$500 inclusive of applicable taxes. ♦Testing conducted by the National Highway Traffic Safety Administration (NHTSA). ♦♦Published by Natural Resources Canada Fuel Consumption Guide 2001.

**WOOD
Wheaton**
CHEVROLET-OLDSMOBILE-CADILLAC



20th Avenue & Victoria Street • 564-4466

TOLL FREE: 1-800-665-8353

Visit: www.woodwheaton.com



SCHULTZ
PONTIAC • BUICK • GMC

1111 Central Street • Tel: (250) 563-0271

TOLL FREE: 1-800-774-5822

Visit: www.schultzpontiac.com